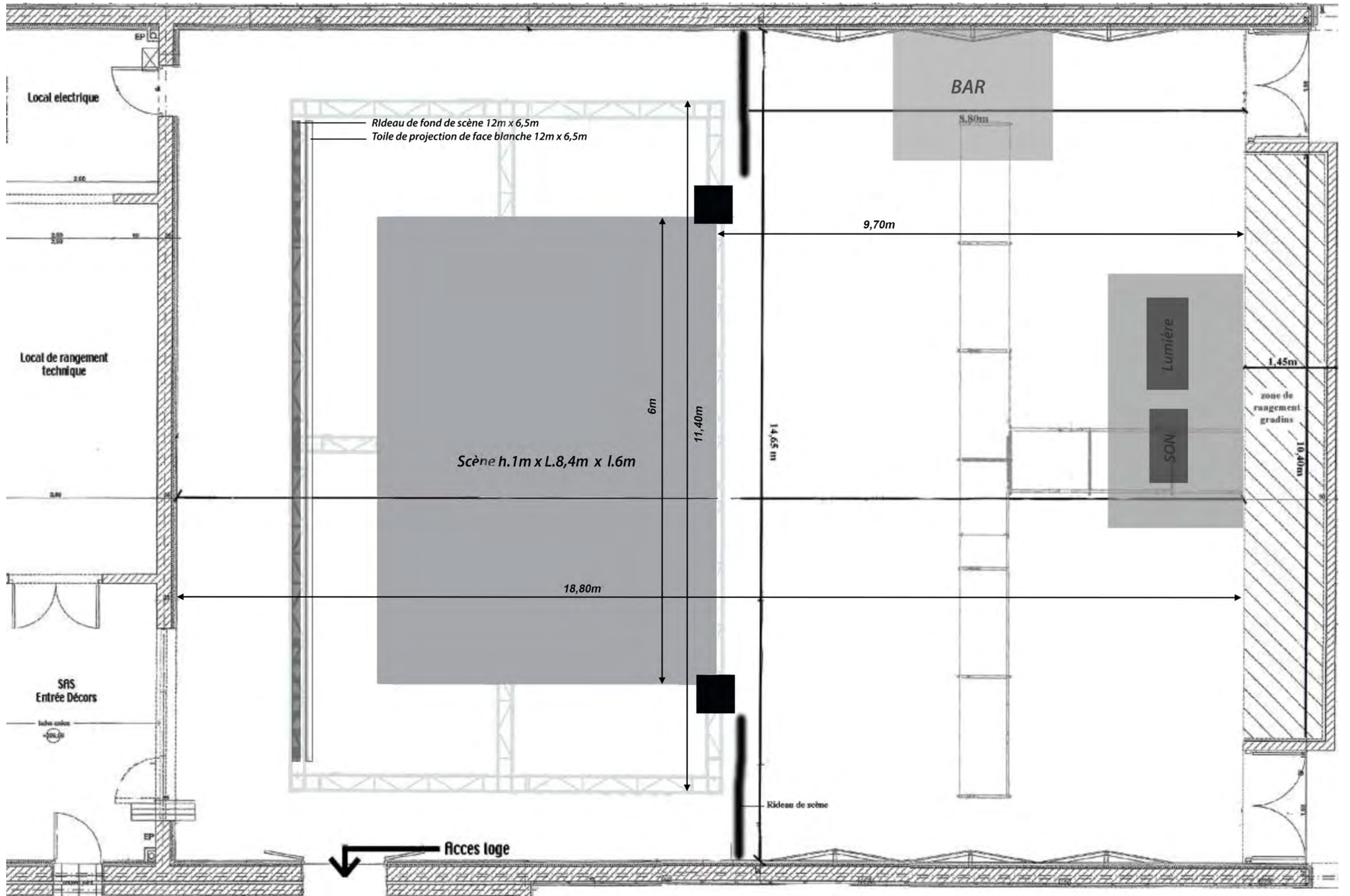


Maison de l'Etudiant **La Centrifugeuse**

- 1 – Plan format concert – vue de dessus – A3**
- 2 – Plan gril et passerelle – vue de dessus – A3**
- 3 – Plan des accroches – vue de dessus – A3**
- 4 – Plan de coupe côté – A3**
- 5 – Plan de coupe vierge – A3**
- 6 – Plan plateau / gradins – vue de dessus – A3**
- 7 – Plan d'implantation gril / passerelle – A3**
- 8 – Plan d'implantation côté – A3**
- 9 – Annexes photos – A3**



Local électrique

Rideau de fond de scène 12m x 6,5m
 Toile de projection de face blanche 12m x 6,5m

BAR

8,80m

9,70m

Local de rangement technique

Lumière

1,45m

zone de rangement gradins

SON

10,40m

Scène h.1m x L.8,4m x l.6m

6m

11,40m

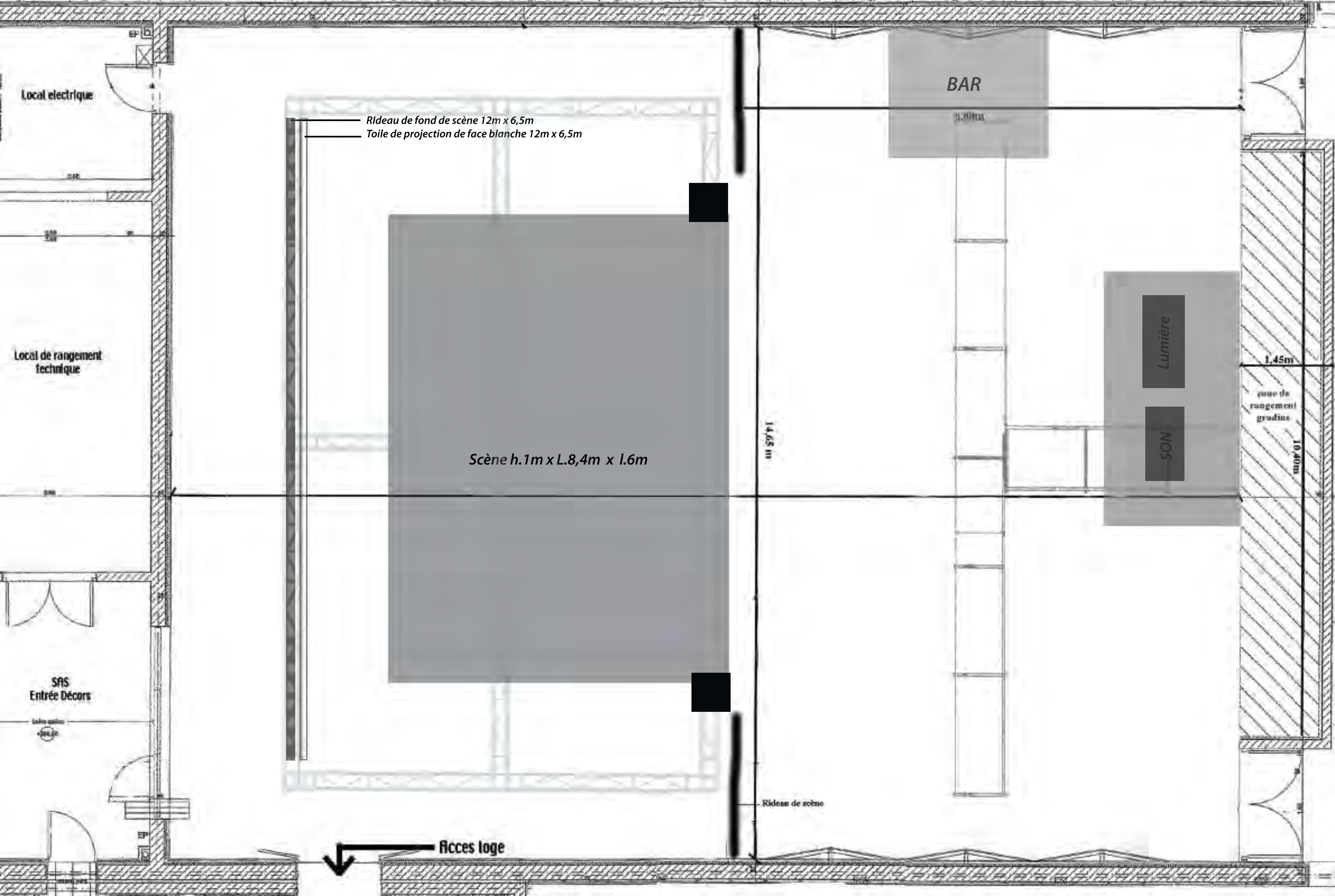
14,65 m

18,80m

SAS
 Entrée Décors

Rideau de scène

Accès loge



Local électrique

Local de rangement technique

SRS
Entrée Décors

Rideau de fond de scène 12m x 6,5m
Toile de projection de face blanche 12m x 6,5m

Scène h.1m x L.8,4m x l.6m

BAR

Lumière

SON

zone de rangement gradins

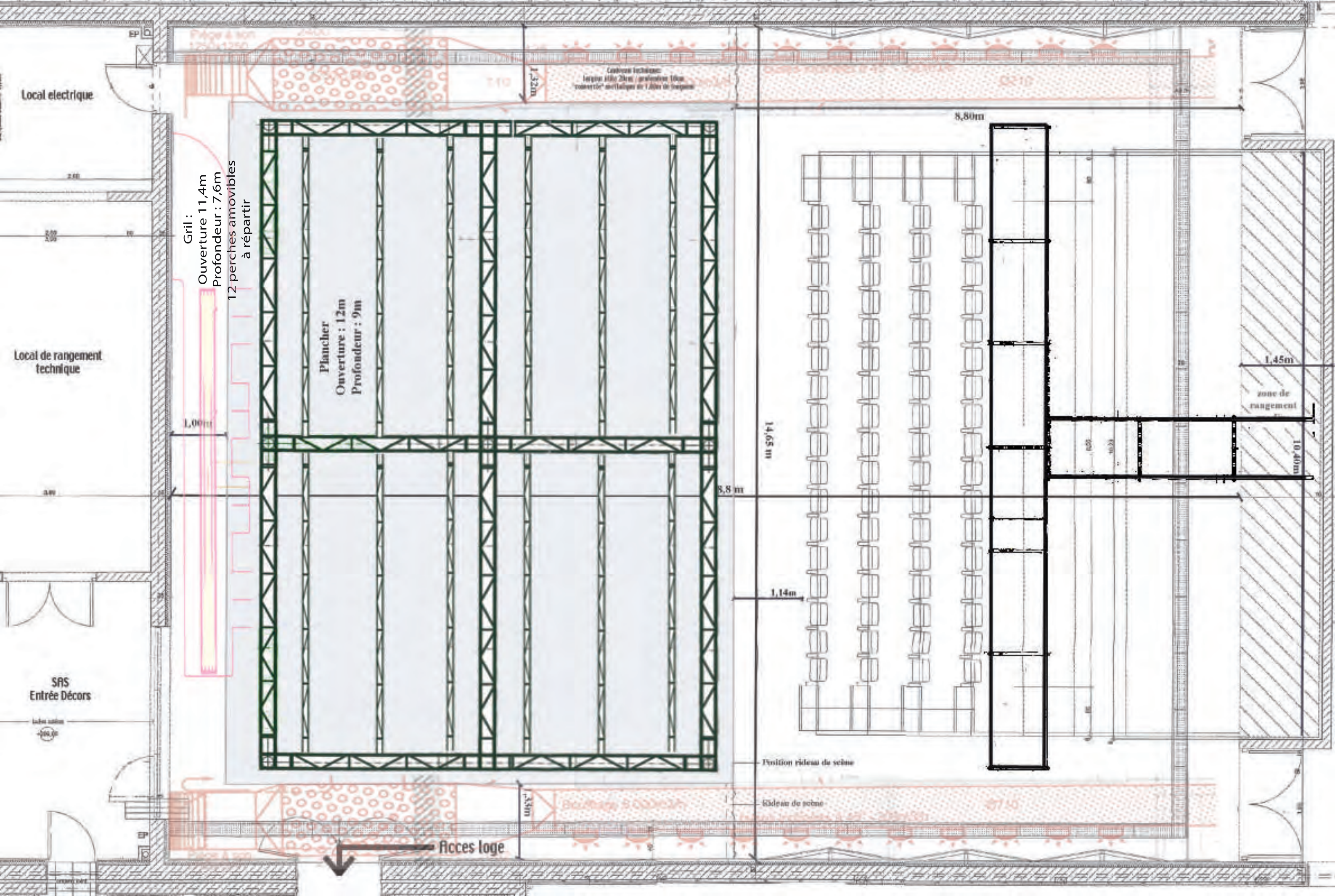
1,45m

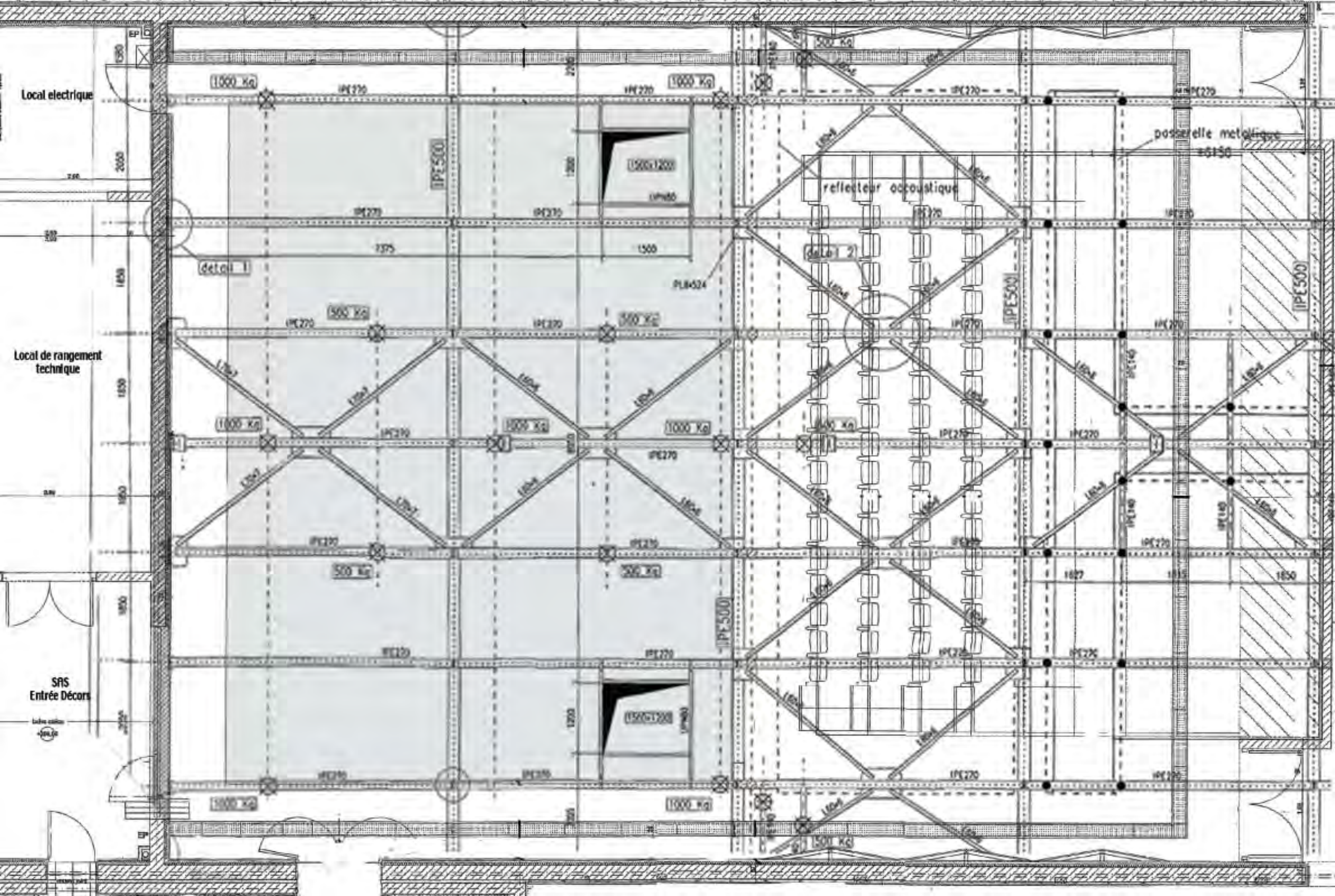
10,40m

14,65 m

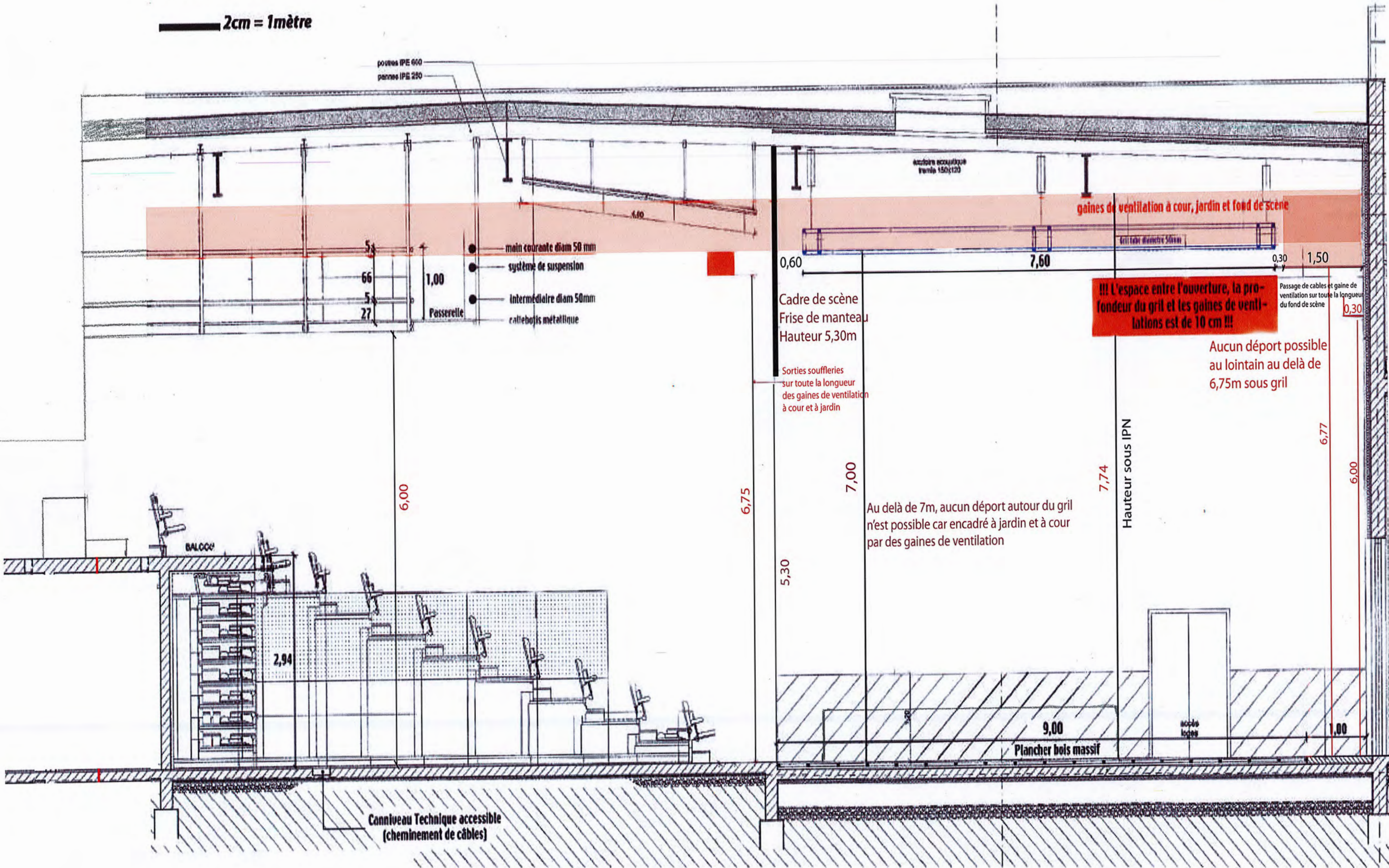
Rideau de scène

Accès loge

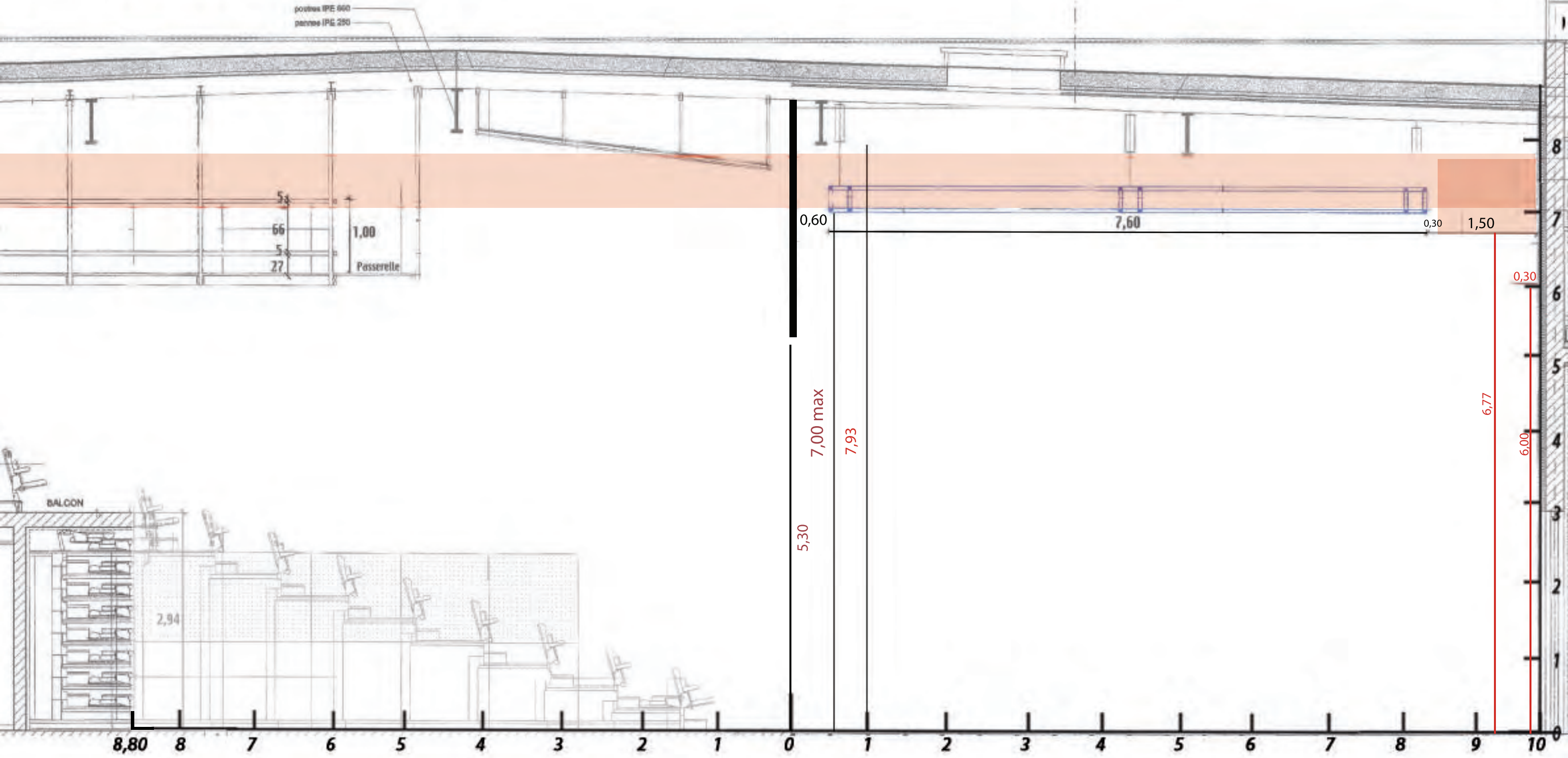


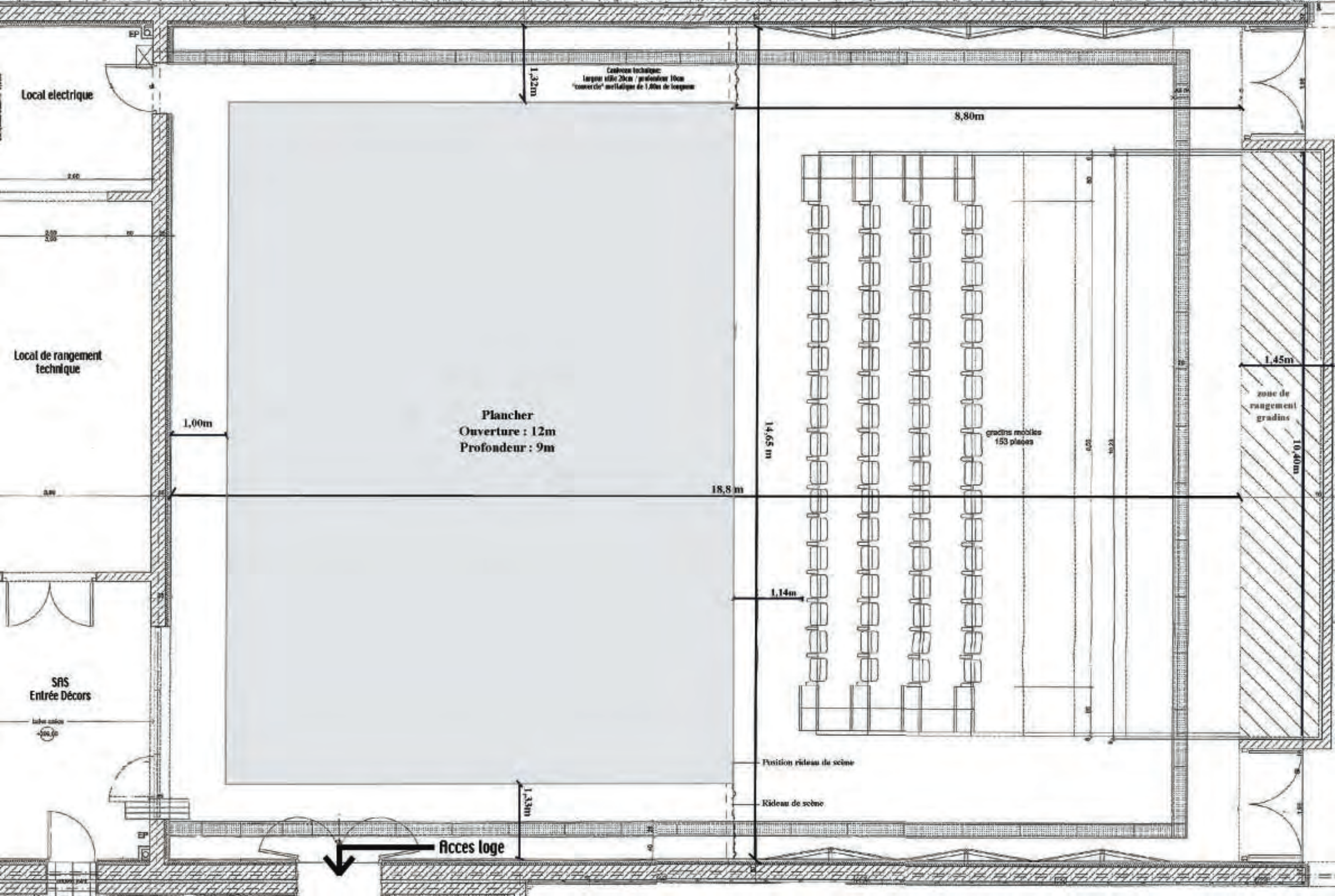


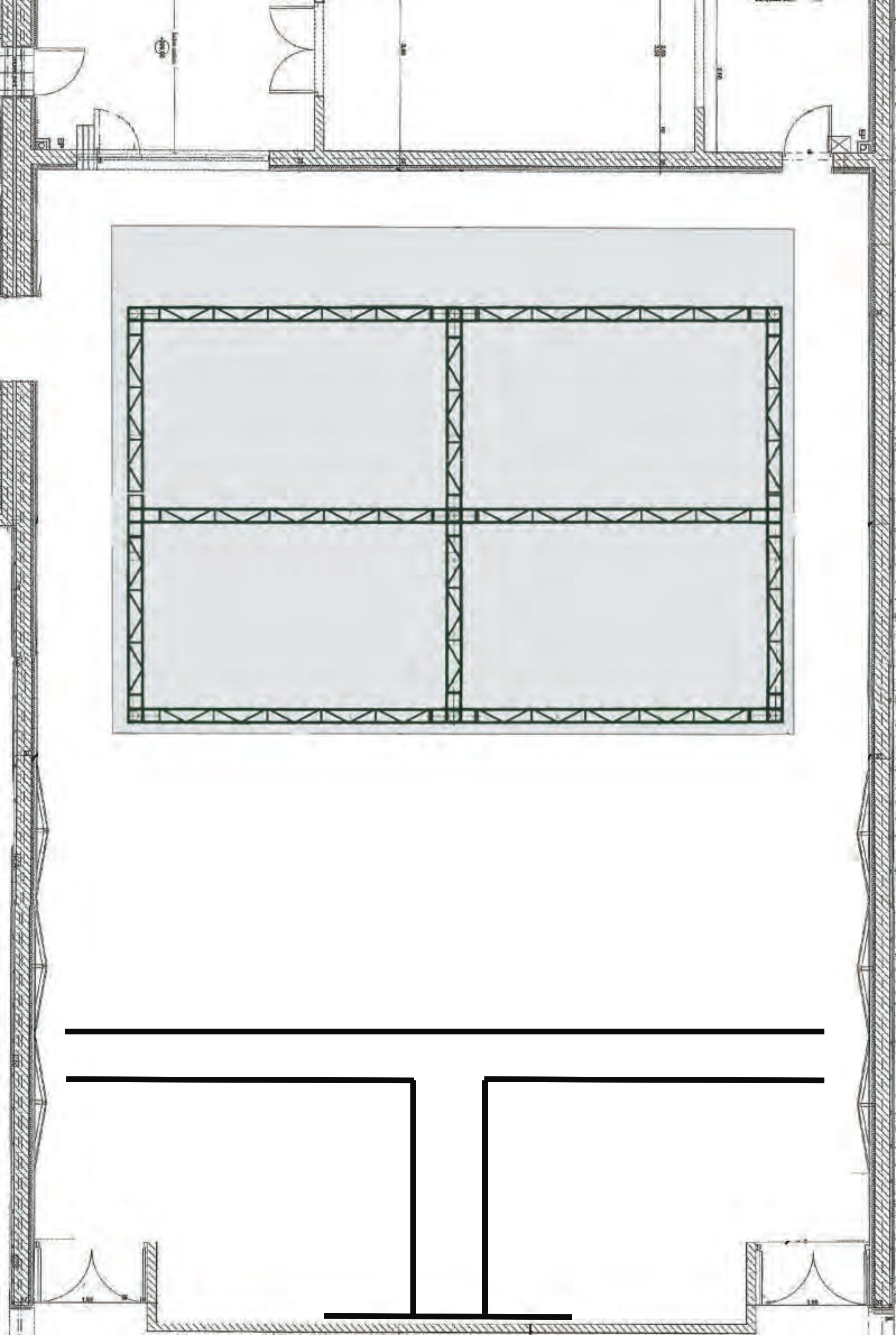
2cm = 1mètre

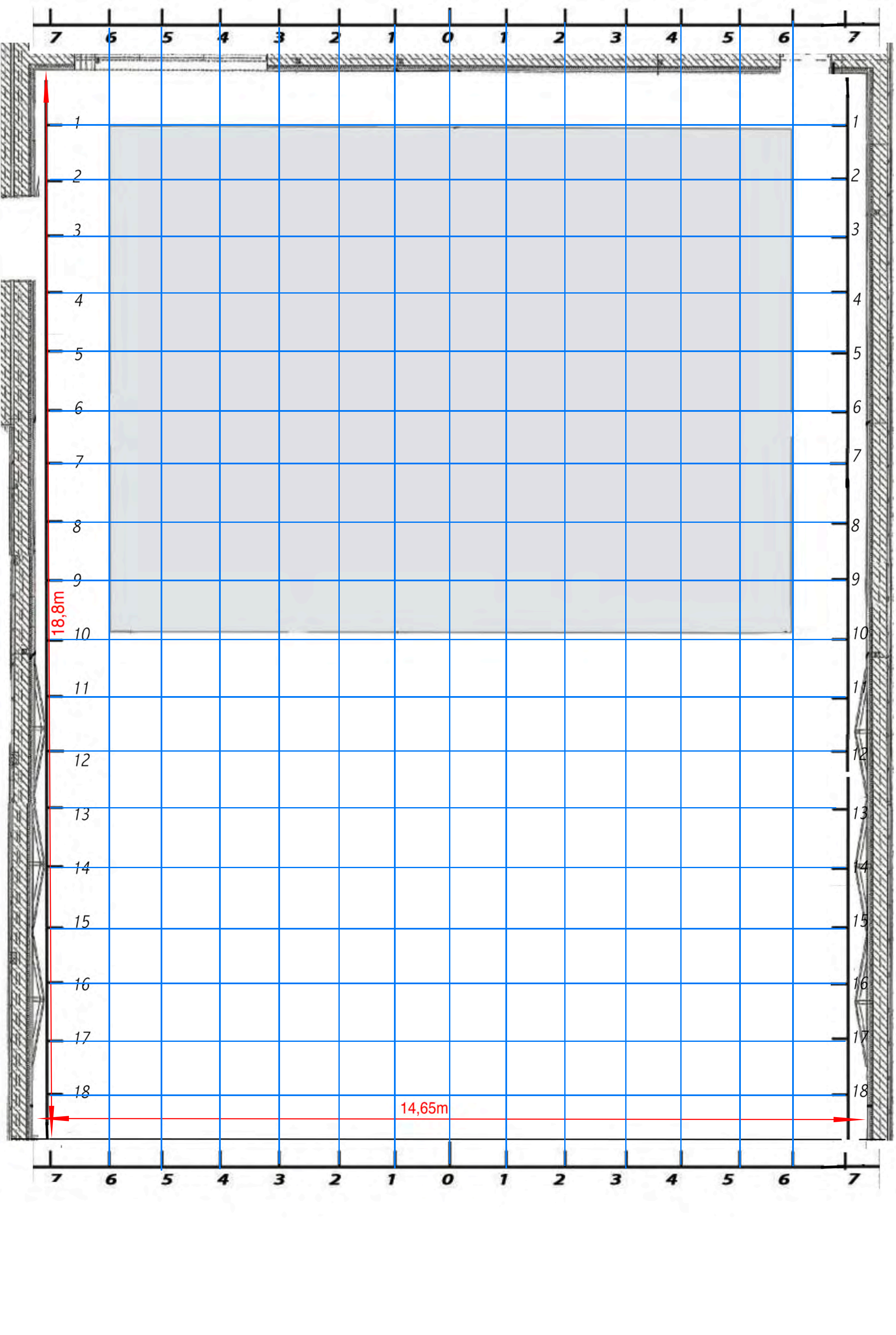


2cm = 1mètre

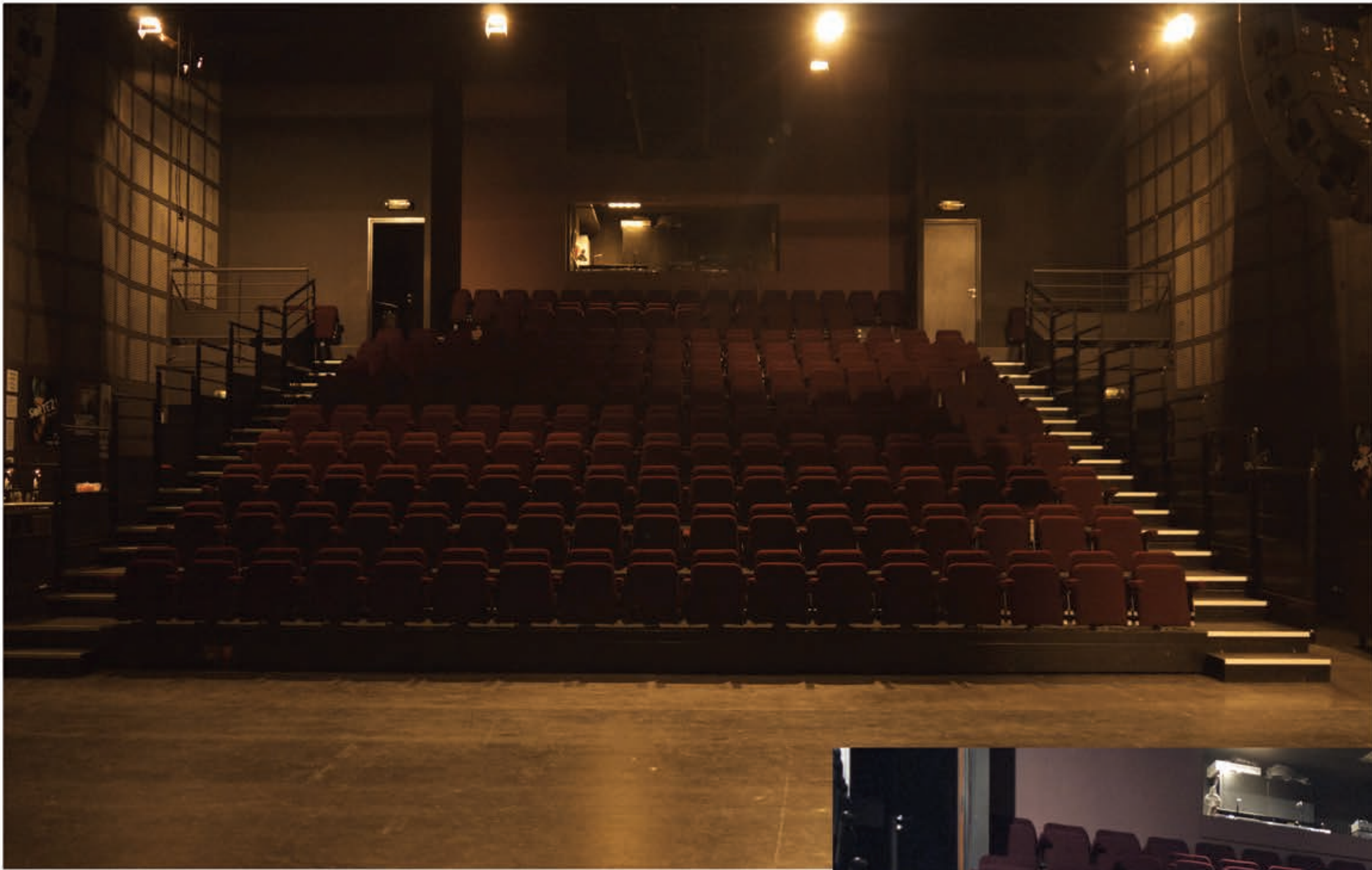


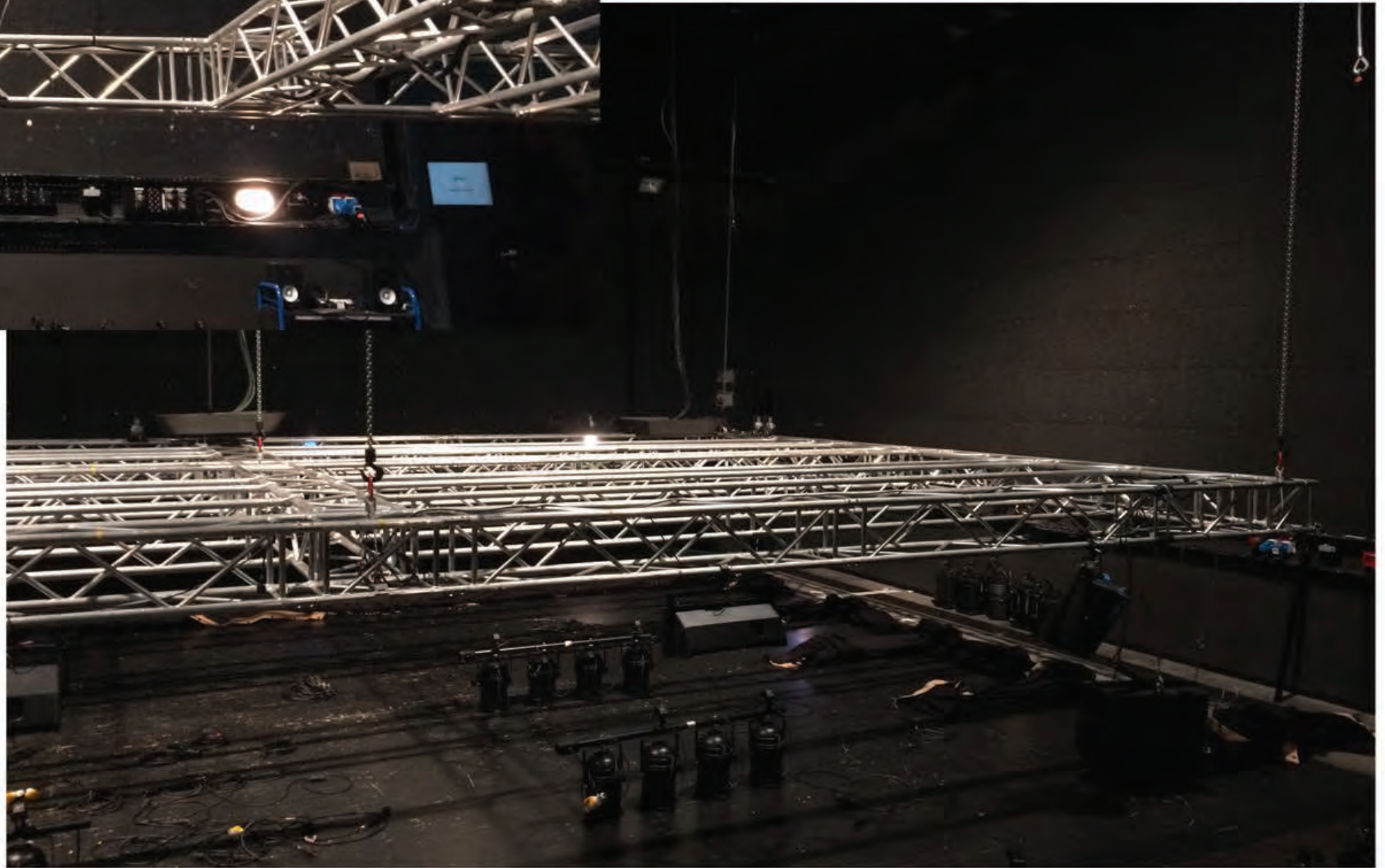
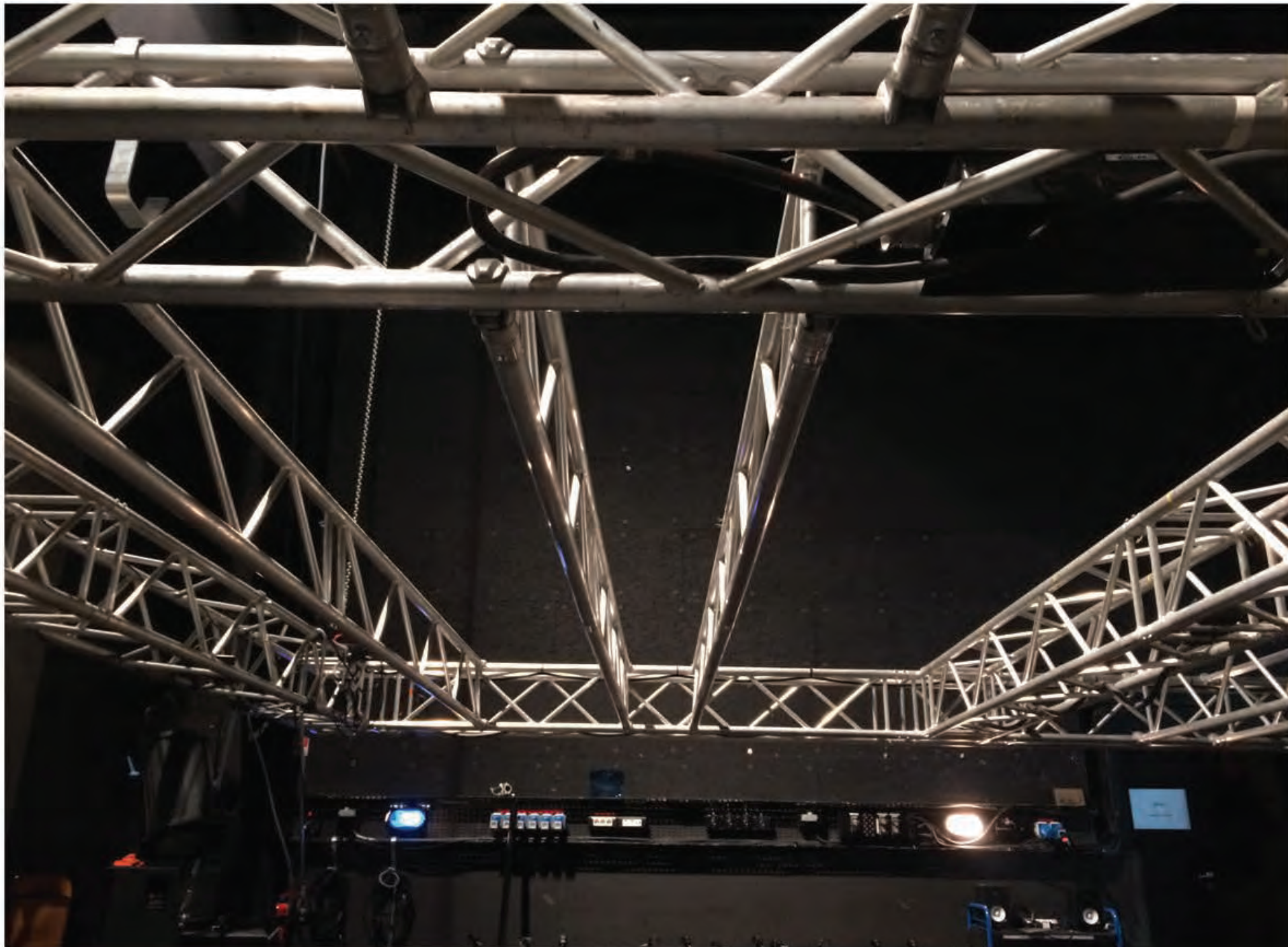
















Plan 1/50ème

2cm = 1mètre

